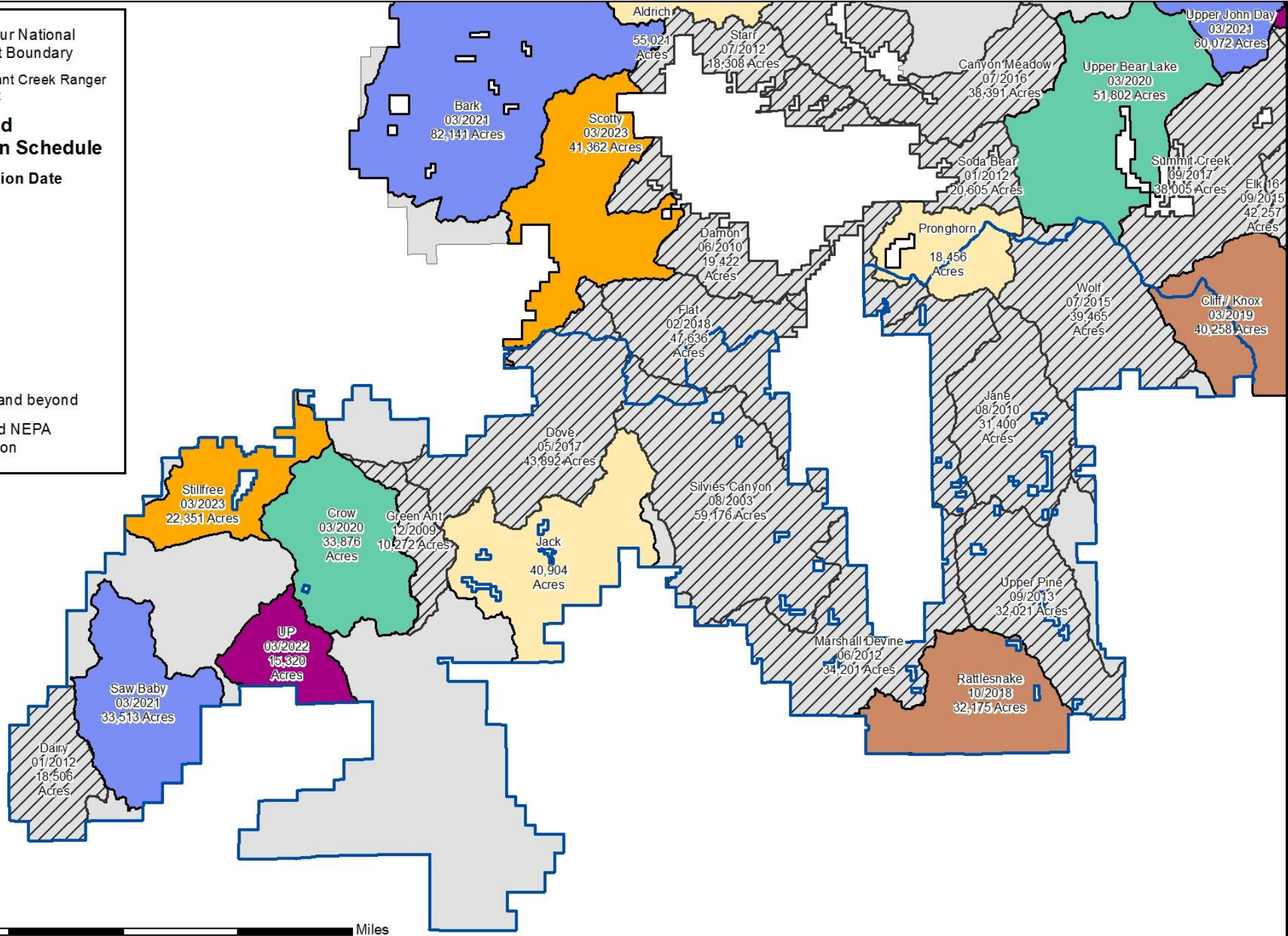


 Malheur National Forest Boundary
 Emigrant Creek Ranger District
Accelerated Restoration Schedule
Project Decision Date
 2018
 2019
 2020
 2021
 2022
 2023
 2024 and beyond
 Signed NEPA Decision



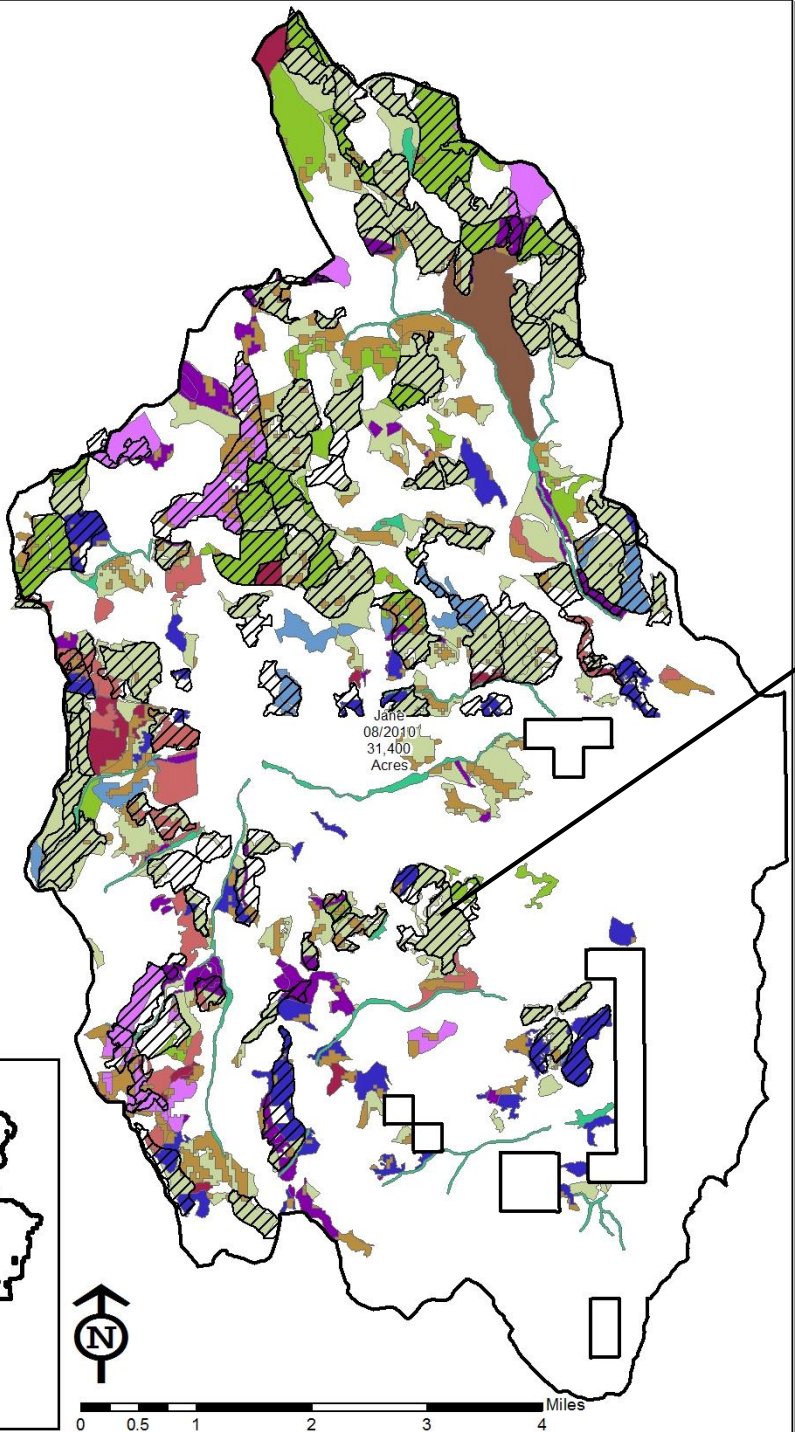
Project Areas with Signed NEPA Decisions on ECRD

- Silvies Canyon
- Green Ant
- Jane
- Dairy
- Marshall Devine
- Upper Pine
- Wolf
- Dove
- Flat



Jane Project Area
Signed 2010

-  FACTS - 5 April 2018
-  Project Boundary
- Jane Proposed Vegetation Treatments**
-  1 U10 Type
-  2 U10 Type B
-  3 10 - 21 Type
-  4 10 - 21 Type B
-  5 U21 Type
-  6 U21 Type B
-  7 Riparian
-  8 >35% Slope Type 1
-  9 Wildlife Corridor
-  10 >35% Slope Type 2
-  11 DOG



UNIT 95 – 149 ACRES

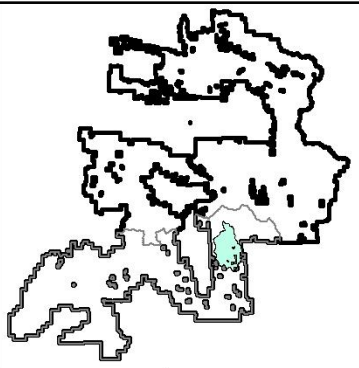
U21” Biomass Thin

- Commercial Thin
- Precommercial Thin
- Grapple or Hand Piling
- Pile Burning

4 activities

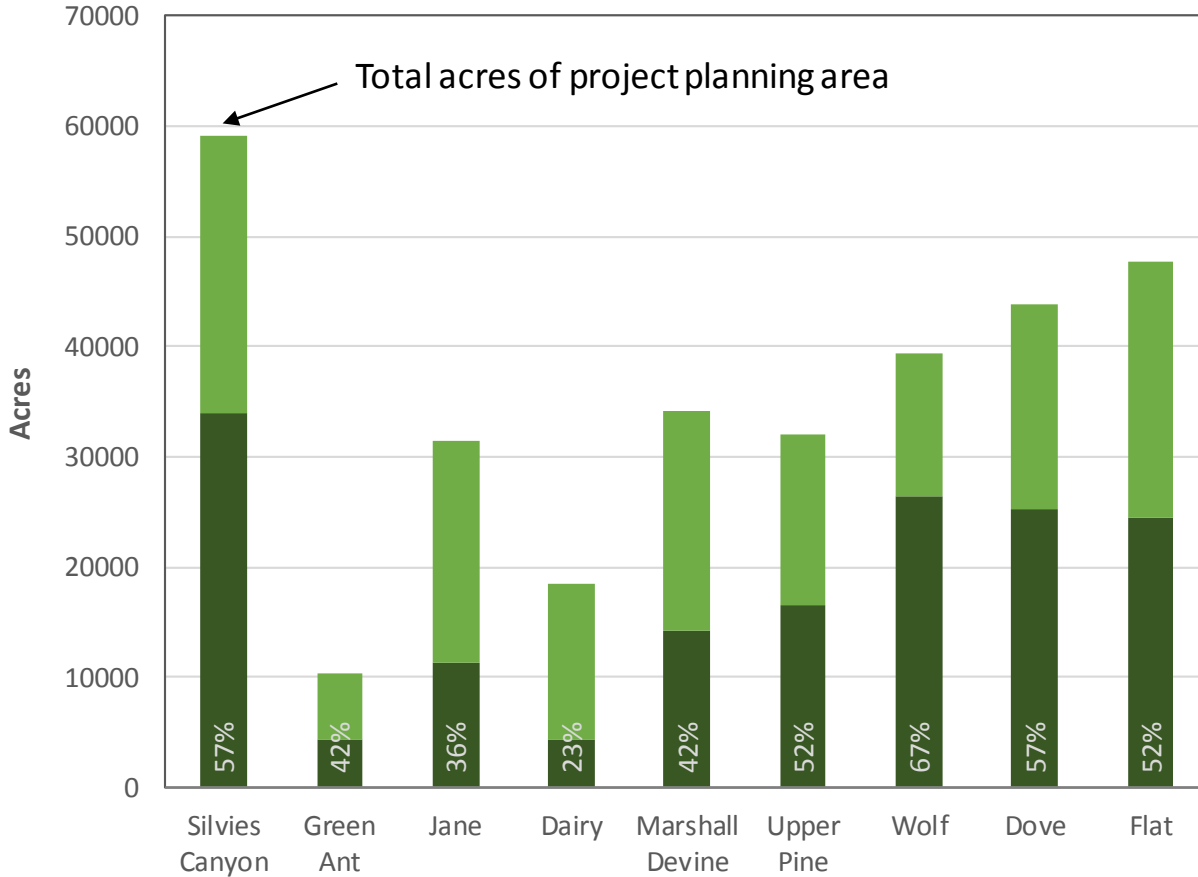
596 acres of accomplishment

149 footprint acres

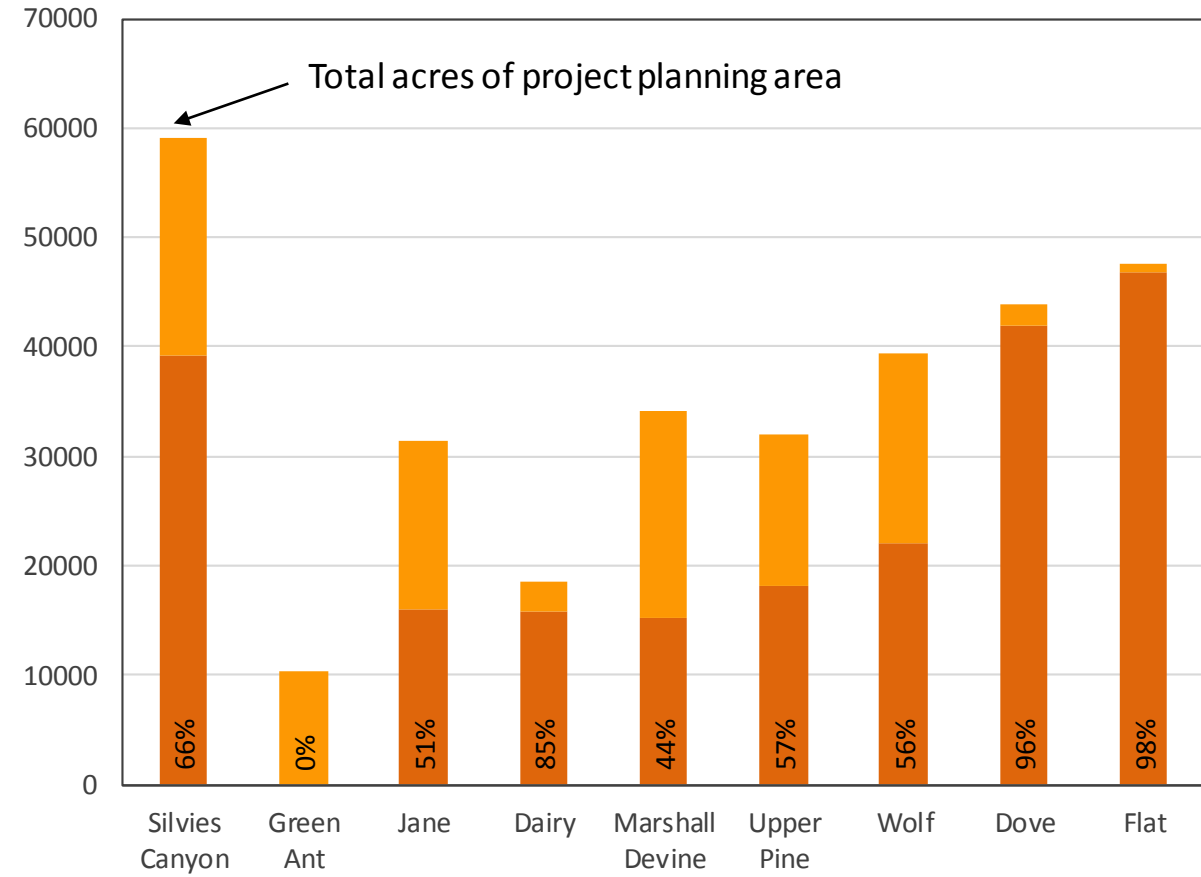


FOOTPRINT TREATMENT ACRES

Planned thinning treatments (Commercial & PCT/NCT)



Planned burning treatments (Prescribed Fire)

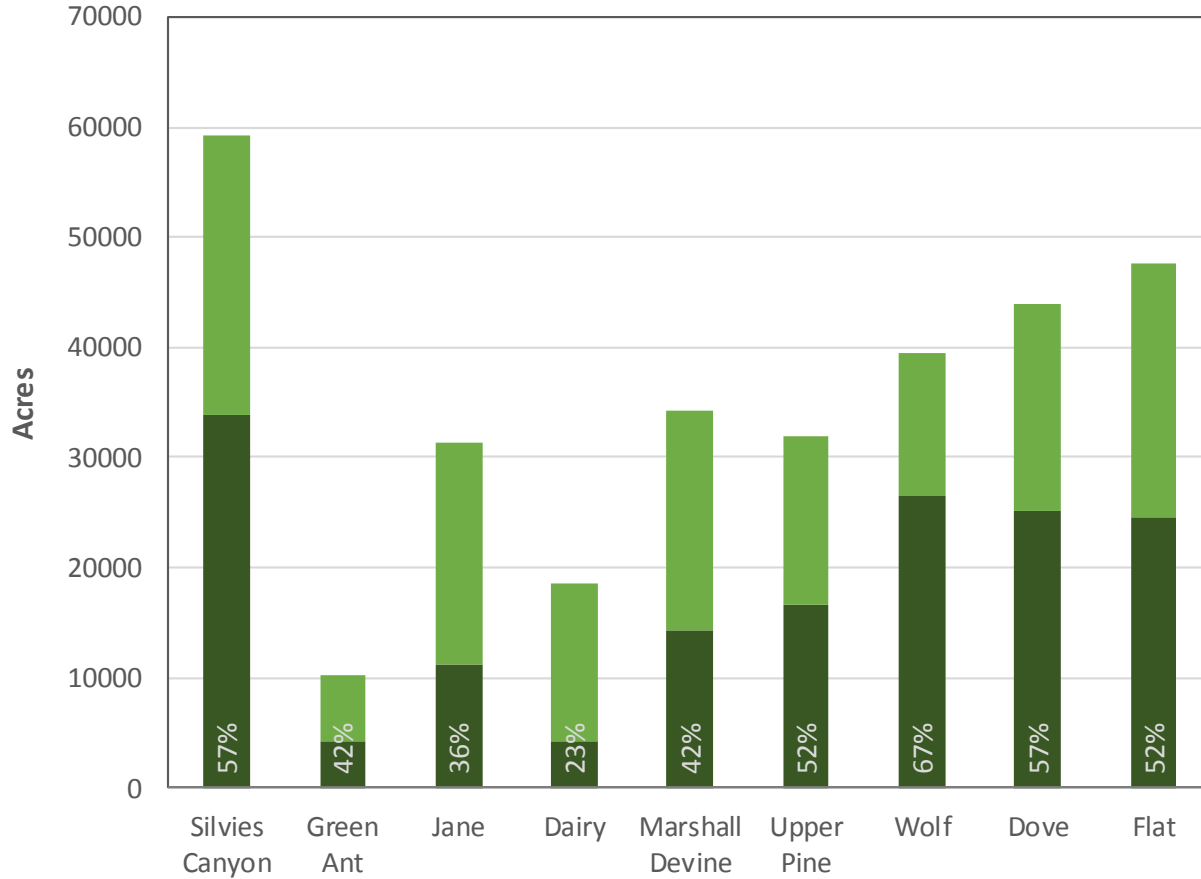


3 Phases of Tracking: Planned, Accomplished, Completed

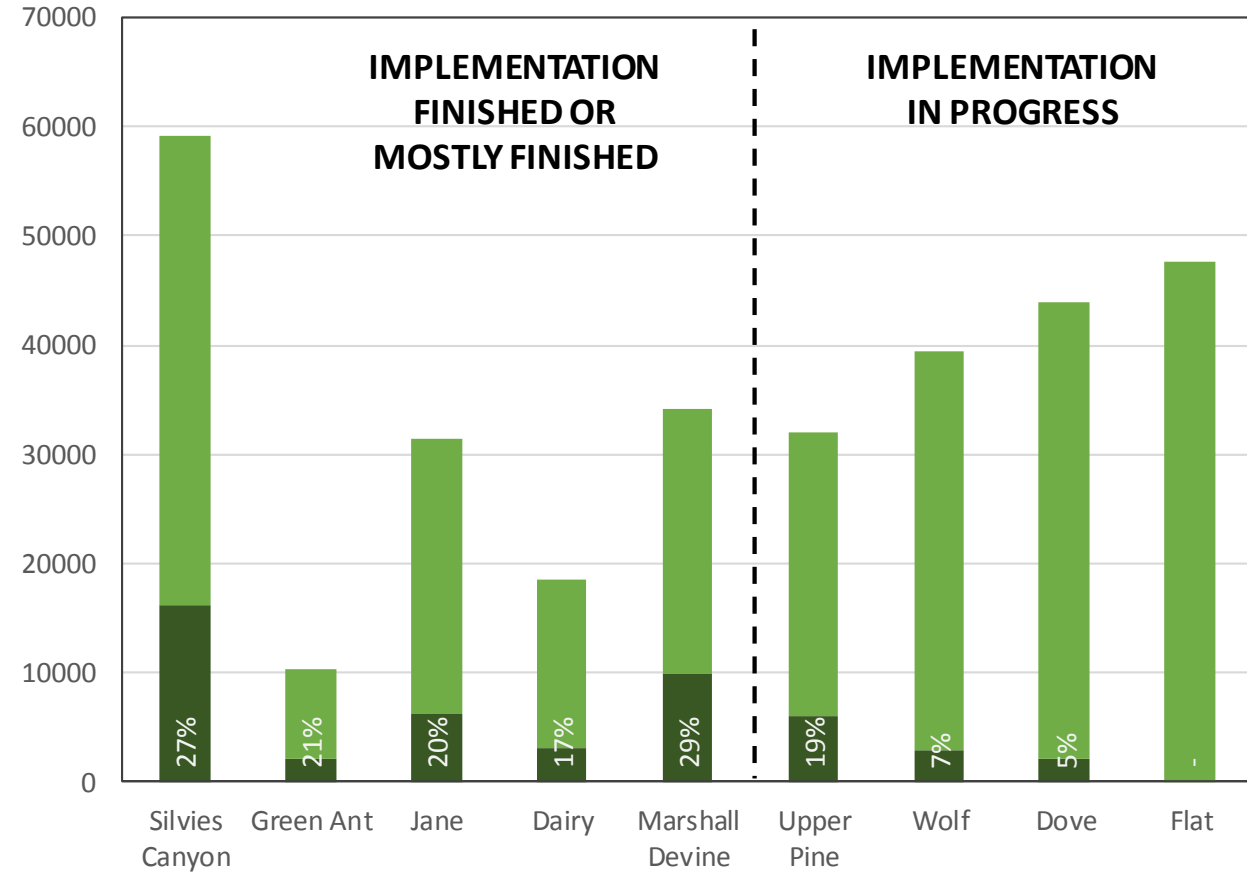
Planned in NEPA vs. Planned in FACTS (Corporate database for tracking vegetation treatments)

FOOTPRINT TREATMENT ACRES

Planned thinning treatments (Commercial & PCT/NCT)



Accomplished thinning treatments (Commercial & PCT/NCT)



3 Phases of Tracking: Planned, Accomplished, Completed

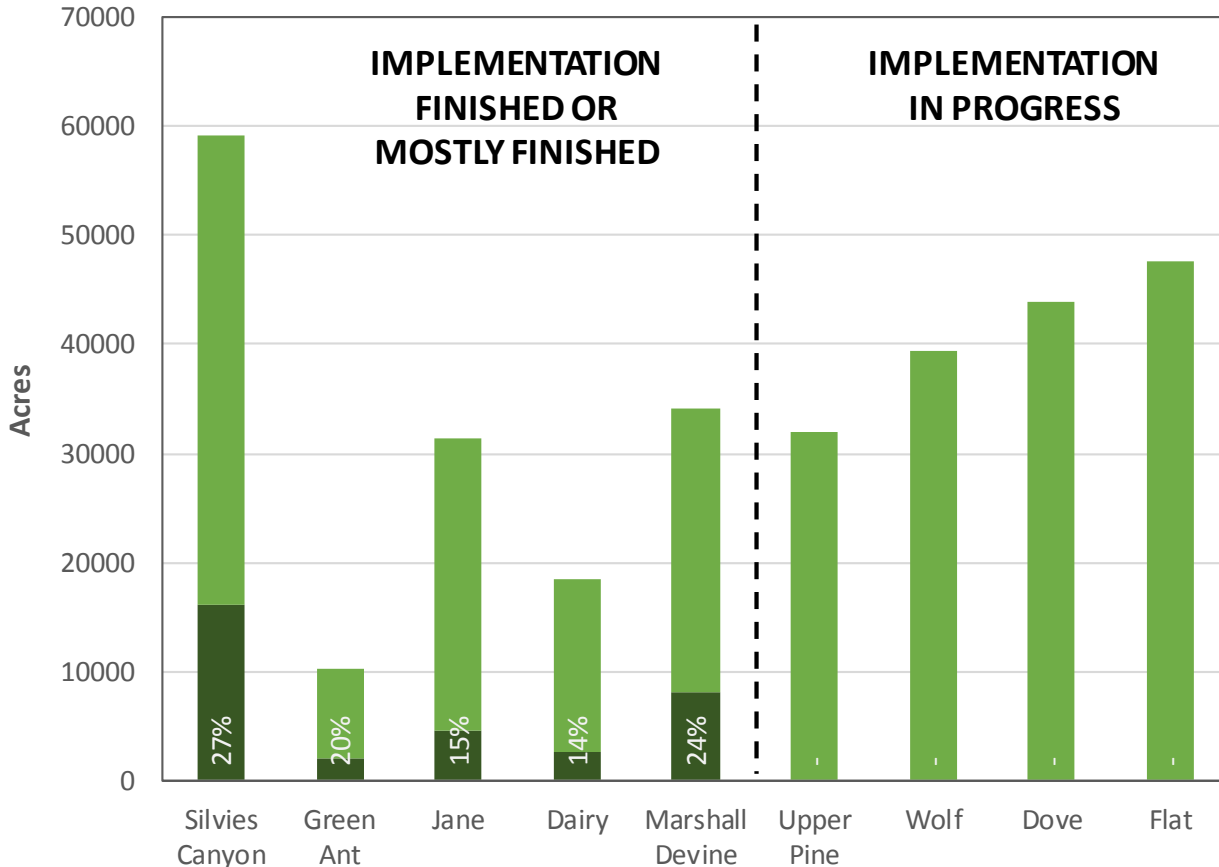
Planned in NEPA vs. Planned in FACTS

Accomplished: A contract has been awarded or internal funding has been obligated

Completed: Work has been completed on the ground

FOOTPRINT TREATMENT ACRES

Completed thinning treatments (Commercial & PCT/NCT)



As of April 2018, within Accelerated Restoration Priority Project Areas, ECRD had successfully:

Planned under NEPA – 160,831 acres

Planned in FACTS – 53,003 acres

Accomplished in FACTS – 48,705 acres

Completed in FACTS – 33,577 acres

Footprint acres of thinning treatments.

3 Phases of Tracking: Planned, Accomplished, Completed

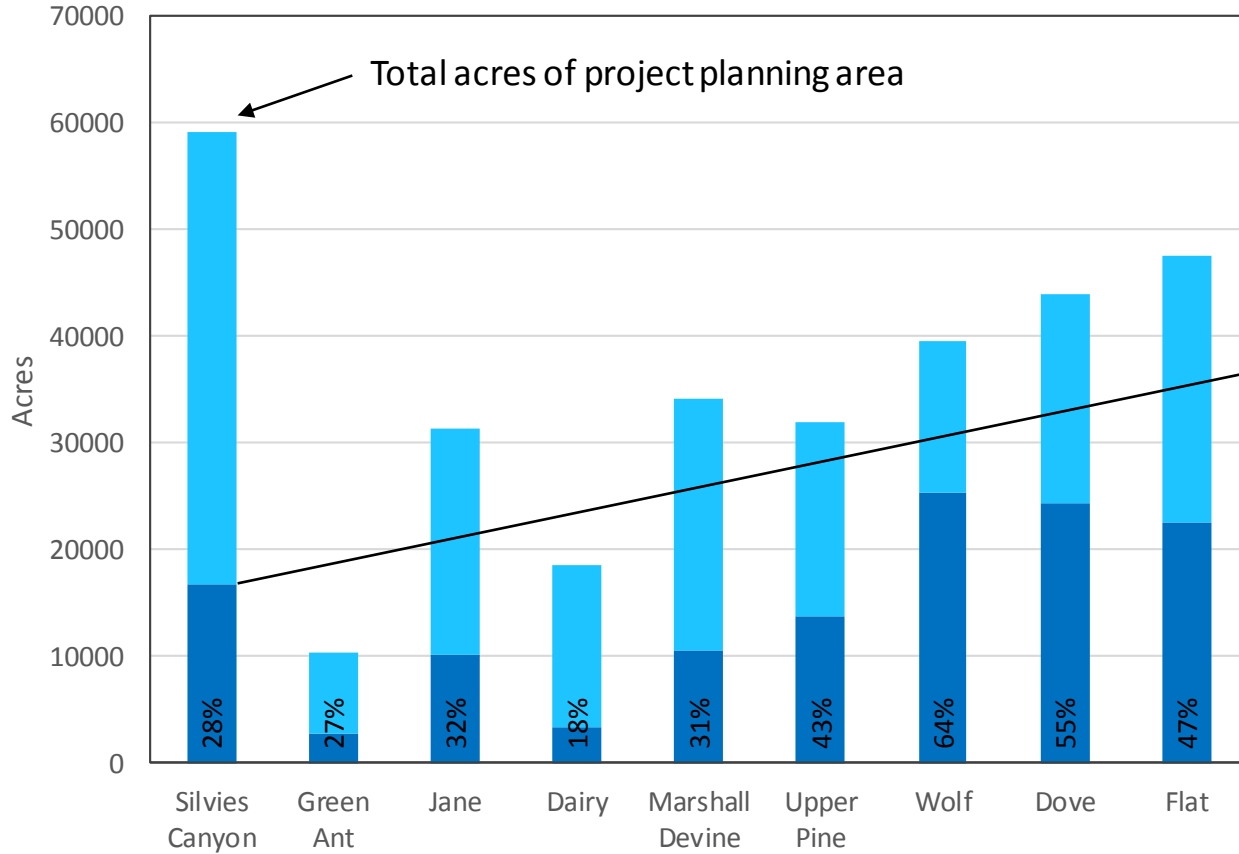
Planned in NEPA vs. Planned in FACTS

Accomplished: A contract has been awarded or internal funding has been obligated

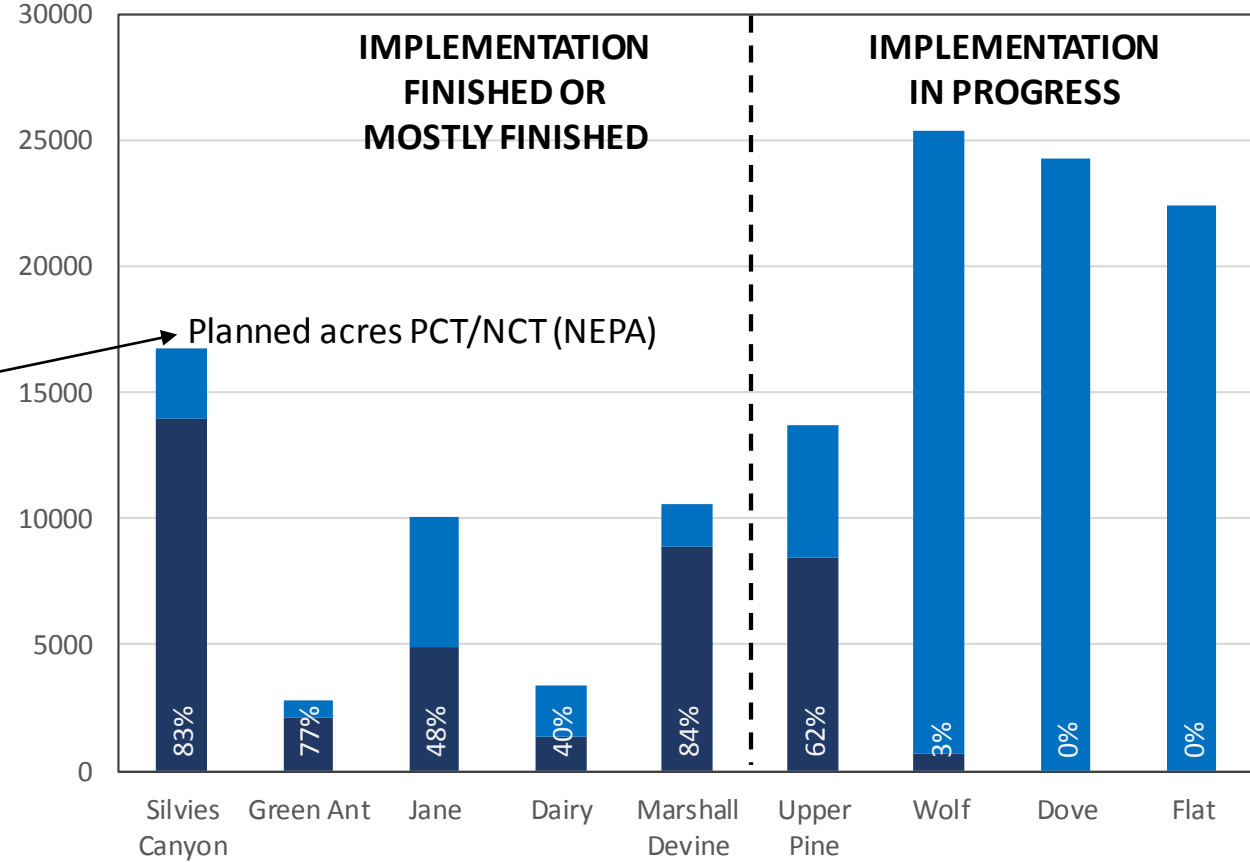
Completed: Work has been completed on the ground

PRE- OR NON-COMMERCIAL THINNING ON ECRD

Planned PCT/NCT acres in project planning area (NEPA)



Planned NEPA PCT/NCT vs. planned FACTS PCT/NCT



Not every acre that could be treated (under NEPA) needs to be treated

PRECOMMERCIAL THINNING TREATMENT ACRES

Project	Decision Date	Project Status	NEPA Planned PCT (Acres)	NEPA Planned Restoration PCT (Acres)*	PCT Accomplished (Acres)	Restoration PCT Accomplished (Acres)*	Percent of Planned - Accomplished	Percent of Restoration Planned - Accomplished
Silvies Canyon	8/4/2003	Completed	16723	983 - 1157	10643	126	64%	11 - 13%
Green Ant	12/1/2009	Completed	2799	286	2146	0	77%	0%
Jane	8/16/2010	Completed (?)	10086	1031 - 1628	2826	512 - 533	28%	33 - 50%
Dairy	1/23/2012	Completed	3409	0	1127	0	33%	NA
Marshall Devine	6/20/2012	Completed	10614	959 - 2286	8295	282 - 868	78%	29 - 38%
Upper Pine	9/23/2013	In Progress	13699	1447 - 2204	3533	19 - 766	26%	1 - 35%
Wolf	7/23/2015	In Progress	25341	5945 - 11279	0	22.3	0%	0%
Dove	5/30/2017	Pending	24283	11713	0	0	0%	0%
Flat	2/6/2018	Pending	22452	4292	0	0	0%	0%
Soldier	12/1/2017	Pending	2962	0	0	0	0%	0%

* Thinning in wildlife corridors accounts for upper end of acreage range. If thinning within wildlife corridors is not considered a "restoration" treatment, lower end of range applies.

Total acres “planned” (NEPA) for precommercial thinning on ECRD: 129,406 acres

Total acres of precommercial thinning “accomplished” on ECRD: 28,570 acres